

The future workplace

Something to look forward to

The world's moving towards a simpler, intelligent workplace for you, your employees and your colleagues. Where everything is geared towards creating more efficient, more productive, happier people.

A place where, as our Workplace 2025 Results Report shows, health, wellness, energy, collaboration and co-creation are all equally important.

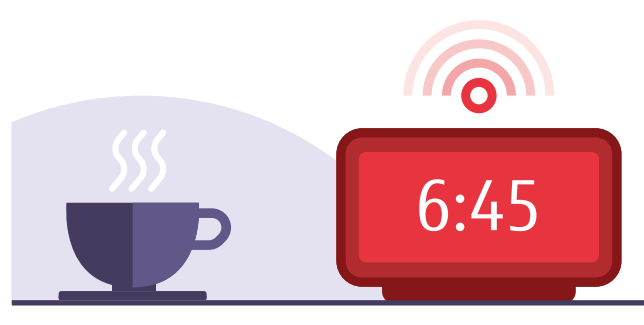
And where in just a few years' time, an employee like Jo could find life easier and more fulfilling.

TIME | LOCATION

PREDICTION FROM WHITE PAPER

6:45 am

Jo's bedroom



The travel report flags up a traffic jam that will slow down Jo's commute. It automatically sets the alarm to go off a bit earlier.

8:00 am

Jo cycling to work



Jo's smart watch measures the carbon efficiency of her commute. Being carbon efficient is one of her KPIs, so once she's back at the office, the data will be measured and logged.

8:45 am

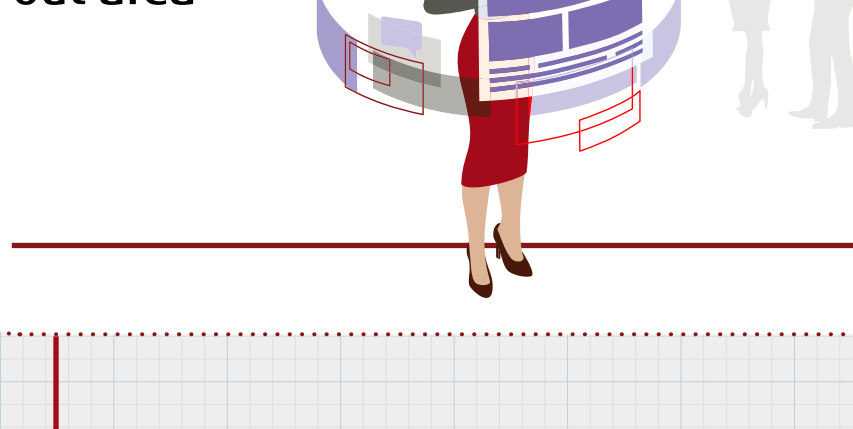
Jo enters office



There will be more attendees than expected in her first meeting, so an app checks for suitable vacant meeting rooms. Meanwhile, it guides Jo to an available workstation. She settles down and prepares for the meeting.

9:35 am

A break out area



Jo joins a group of colleagues gathered round an interactive virtual screen.

11:00 am

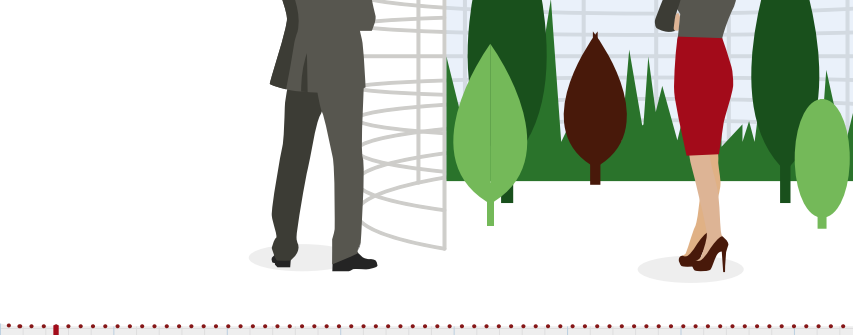
Jo's desk



Jo could do with a bit more energy. There's still so much to do. A drone delivers an orange juice and some biscuits to her desk.

13:30 pm

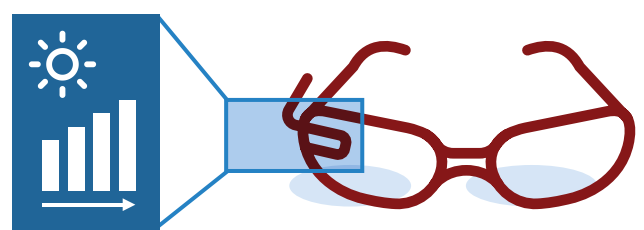
Working in the wild



The facilitator has made the next meeting room into a more creative space by setting up a virtual forest.

14:45 pm

Back at Jo's desk



It's been a non-stop day so far. Jo's Smart glasses spot her concentration is starting to drop. They increase the amount of light she's seeing.

15:45 pm

The office wellbeing space



It's time for a mid-afternoon break. Jo's devices automatically lock for half an hour. She heads for an exercise break in the office wellbeing area.

18:30 pm

Jo cycling home



It's later than usual when Jo sets off home. She'll put the extra hours towards an early finish the next day so that she can take a long weekend.

At Fujitsu, we're ready for the future workplace. And we've put everything in place to support it, from the right infrastructure to the best intelligent support services.

Ready to start planning your workplace of the future?

[Contact us for our advice and help](#)

For more information about what you can expect from the workplace of the future, read our white papers:

> [Workplace 2025: Take a glimpse into the Future Workplace](#)

> [Workplace 2025: Is Your Workplace an Asset in the Race for Talent?](#)

